



COMMONWEALTH OF KENTUCKY
TRANSPORTATION CABINET
www.transportation.ky.gov/

Andy Beshear
GOVERNOR

Jim Gray
SECRETARY

September 21, 2022

CALL NO. 103
CONTRACT ID NO. 221345
ADDENDUM # 2

Subject: BULLITT COUNTY, STP 5118 (045)
Letting September 22, 2022

- (1) Revised - Proposal Bid Items - Pages 225-227 of 227
- (2) Revised - Plan Sheets - U2 and U4

Proposal revisions are available at <http://transportation.ky.gov/Construction-Procurement/>.

If you have any questions, please contact us at 502-564-3500.

Sincerely,

Rachel Mills,

A handwritten signature in cursive script that reads "Rachel Mills".

Rachel Mills, P.E.
Director
Division of Construction Procurement

RM:mr
Enclosures

PROPOSAL BID ITEMS

221348

Page 1 of 3

Report Date 9/21/22

Section: 0001 - PAVING

LINE	BID CODE	ALT	DESCRIPTION	QUANTITY	UNIT	UNIT PRIC	FP	AMOUNT
0010	00003		CRUSHED STONE BASE	2,627.00	TON		\$	
0020	00078		CRUSHED AGGREGATE SIZE NO 2	2,152.00	TON		\$	
0030	00100		ASPHALT SEAL AGGREGATE	18.00	TON		\$	
0040	00103		ASPHALT SEAL COAT	2.00	TON		\$	
0050	00190		LEVELING & WEDGING PG64-22	151.00	TON		\$	
0060	00214		CL3 ASPH BASE 1.00D PG64-22	2,664.00	TON		\$	
0070	00388		CL3 ASPH SURF 0.38B PG64-22	801.00	TON		\$	
0080	02101		CEM CONC ENT PAVEMENT-8 IN	248.00	SQYD		\$	
0090	02677		ASPHALT PAVE MILLING & TEXTURING	675.00	TON		\$	
0100	24970EC		ASPHALT MATERIAL FOR TACK NON-TRACKING	22.00	TON		\$	

Section: 0002 - ROADWAY

LINE	BID CODE	ALT	DESCRIPTION	QUANTITY	UNIT	UNIT PRIC	FP	AMOUNT
0110	01000		PERFORATED PIPE-4 IN	900.00	LF		\$	
0120	01028		PERF PIPE HEADWALL TY 3-4 IN	3.00	EACH		\$	
0130	01310		REMOVE PIPE	173.00	LF		\$	
0140	01810		STANDARD CURB AND GUTTER	1,084.00	LF		\$	
0150	02014		BARRICADE-TYPE III	12.00	EACH		\$	
0160	02159		TEMP DITCH	1,231.00	LF		\$	
0170	02160		CLEAN TEMP DITCH	616.00	LF		\$	
0180	02200		ROADWAY EXCAVATION	2,345.00	CUYD		\$	
0190	02242		WATER	400.00	MGAL		\$	
0200	02429		RIGHT-OF-WAY MONUMENT TYPE 1	14.00	EACH		\$	
0210	02432		WITNESS POST	14.00	EACH		\$	
0220	02545		CLEARING AND GRUBBING 3.75 ACRES	1.00	LS		\$	
0230	02562		TEMPORARY SIGNS	500.00	SQFT		\$	
0240	02585		EDGE KEY	51.00	LF		\$	
0250	02602		FABRIC-GEOTEXTILE CLASS 1	7,255.00	SQYD		\$	
0260	02603		FABRIC-GEOTEXTILE CLASS 2	900.00	SQYD		\$	
0270	02604		FABRIC-GEOTEXTILE CLASS 1A	6,923.00	SQYD		\$	
0280	02611		HANDRAIL-TYPE A-1	104.00	LF		\$	
0290	02625		REMOVE HEADWALL	6.00	EACH		\$	
0300	02650		MAINTAIN & CONTROL TRAFFIC	1.00	LS		\$	
0310	02671		PORTABLE CHANGEABLE MESSAGE SIGN	2.00	EACH		\$	
0320	02676		MOBILIZATION FOR MILL & TEXT	1.00	LS		\$	
0330	02701		TEMP SILT FENCE	1,231.00	LF		\$	
0340	02703		SILT TRAP TYPE A	4.00	EACH		\$	
0350	02704		SILT TRAP TYPE B	4.00	EACH		\$	
0360	02705		SILT TRAP TYPE C	4.00	EACH		\$	
0370	02706		CLEAN SILT TRAP TYPE A	4.00	EACH		\$	
0380	02707		CLEAN SILT TRAP TYPE B	4.00	EACH		\$	
0390	02708		CLEAN SILT TRAP TYPE C	4.00	EACH		\$	
0400	02720		SIDEWALK-4 IN CONCRETE	1,132.00	SQYD		\$	

PROPOSAL BID ITEMS

221348

Page 2 of 3

Report Date 9/21/22

LINE	BID CODE	ALT	DESCRIPTION	QUANTITY	UNIT	UNIT PRIC	FP	AMOUNT
0410	02721		REMOVE CONCRETE SIDEWALK	701.00	SQYD		\$	
0420	02726		STAKING	1.00	LS		\$	
0430	05950		EROSION CONTROL BLANKET	372.00	SQYD		\$	
0440	05952		TEMP MULCH	12,100.00	SQYD		\$	
0450	05953		TEMP SEEDING AND PROTECTION	9,075.00	SQYD		\$	
0460	05963		INITIAL FERTILIZER	2.00	TON		\$	
0470	05964		MAINTENANCE FERTILIZER	4.00	TON		\$	
0480	05985		SEEDING AND PROTECTION	2,130.00	SQYD		\$	
0490	05990		SODDING	8,557.00	SQYD		\$	
0500	05992		AGRICULTURAL LIMESTONE	2.00	TON		\$	
0510	06511		PAVE STRIPING-TEMP PAINT-6 IN	19,600.00	LF		\$	
0520	06515		PAVE STRIPING-PERM PAINT-6 IN	10,844.00	LF		\$	
0530	06568		PAVE MARKING-THERMO STOP BAR-24IN	174.00	LF		\$	
0540	06570		PAVE MARKING-PAINT CROSS-HATCH	501.00	SQFT		\$	
0550	06573		PAVE MARKING-THERMO STR ARROW	2.00	EACH		\$	
0560	06574		PAVE MARKING-THERMO CURV ARROW	10.00	EACH		\$	
0570	06610		INLAID PAVEMENT MARKER-MW	42.00	EACH		\$	
0580	06612		INLAID PAVEMENT MARKER-BY	42.00	EACH		\$	
0590	20071EC		JOINT ADHESIVE	7,858.00	LF		\$	
0600	20550ND		SAWCUT PAVEMENT	3,974.00	LF		\$	
0610	21289ED		LONGITUDINAL EDGE KEY	3,884.00	LF		\$	
0620	22664EN		WATER BLASTING EXISTING STRIPE	5,000.00	LF		\$	
0630	23158ES505		DETECTABLE WARNINGS	157.00	SQFT		\$	
0640	23274EN11F		TURF REINFORCEMENT MAT 1	1,264.00	SQYD		\$	

Section: 0003 - DRAINAGE

LINE	BID CODE	ALT	DESCRIPTION	QUANTITY	UNIT	UNIT PRIC	FP	AMOUNT
0650	00440		ENTRANCE PIPE-15 IN	226.00	LF		\$	
0660	00520		STORM SEWER PIPE-12 IN	47.00	LF		\$	
0670	00528		STORM SEWER PIPE-36 IN	52.00	LF		\$	
0680	00980		SLOTTED DRAIN PIPE-12 IN	45.00	LF		\$	
0690	01395		METAL END SECTION TY 3-36 IN	1.00	EACH		\$	
0700	01440		SLOPED BOX INLET-OUTLET TYPE 1	3.00	EACH		\$	
0710	01442		SLOPED AND PARALLEL HEADWALL-12 IN	2.00	EACH		\$	
0720	01550		DROP BOX INLET TYPE 12A	20.00	LF		\$	
0730	01577		DROP BOX INLET TYPE 14	1.00	EACH		\$	
0740	01648		JUNCTION BOX-54 IN	1.00	EACH		\$	
0750	02223		GRANULAR EMBANKMENT FOR RCBC EXTENSION	12.00	CUYD		\$	
0760	02607		FABRIC-GEOTEXTILE CLASS 2 FOR PIPE	572.00	SQYD	\$2.00	\$	\$1,144.00
0770	08003		FOUNDATION PREPARATION FOR RCBC EXTENSION	1.00	LS		\$	
0780	08100		CONCRETE-CLASS A FOR RCBC EXTENSION	5.00	CUYD		\$	
0790	08150		STEEL REINFORCEMENT FOR RCBC EXTENSION	480.00	LB		\$	
0800	24575ES610		HEADWALL SLOPED AND MITERED FOR RCBC EXTENSION	1.00	EACH		\$	

PROPOSAL BID ITEMS

221348

Report Date 9/21/22

Page 3 of 3

Section: 0004 - SIGNING

LINE	BID CODE	ALT	DESCRIPTION	QUANTITY	UNIT	UNIT PRIC	FP	AMOUNT
0810	06406		SBM ALUM SHEET SIGNS .080 IN	136.00	SQFT		\$	
0820	06410		STEEL POST TYPE 1	208.00	LF		\$	
0830	21373ND		REMOVE SIGN	9.00	EACH		\$	
0840	24631EC		BARCODE SIGN INVENTORY	25.00	EACH		\$	

Section: 0005 - SIGNALIZATION

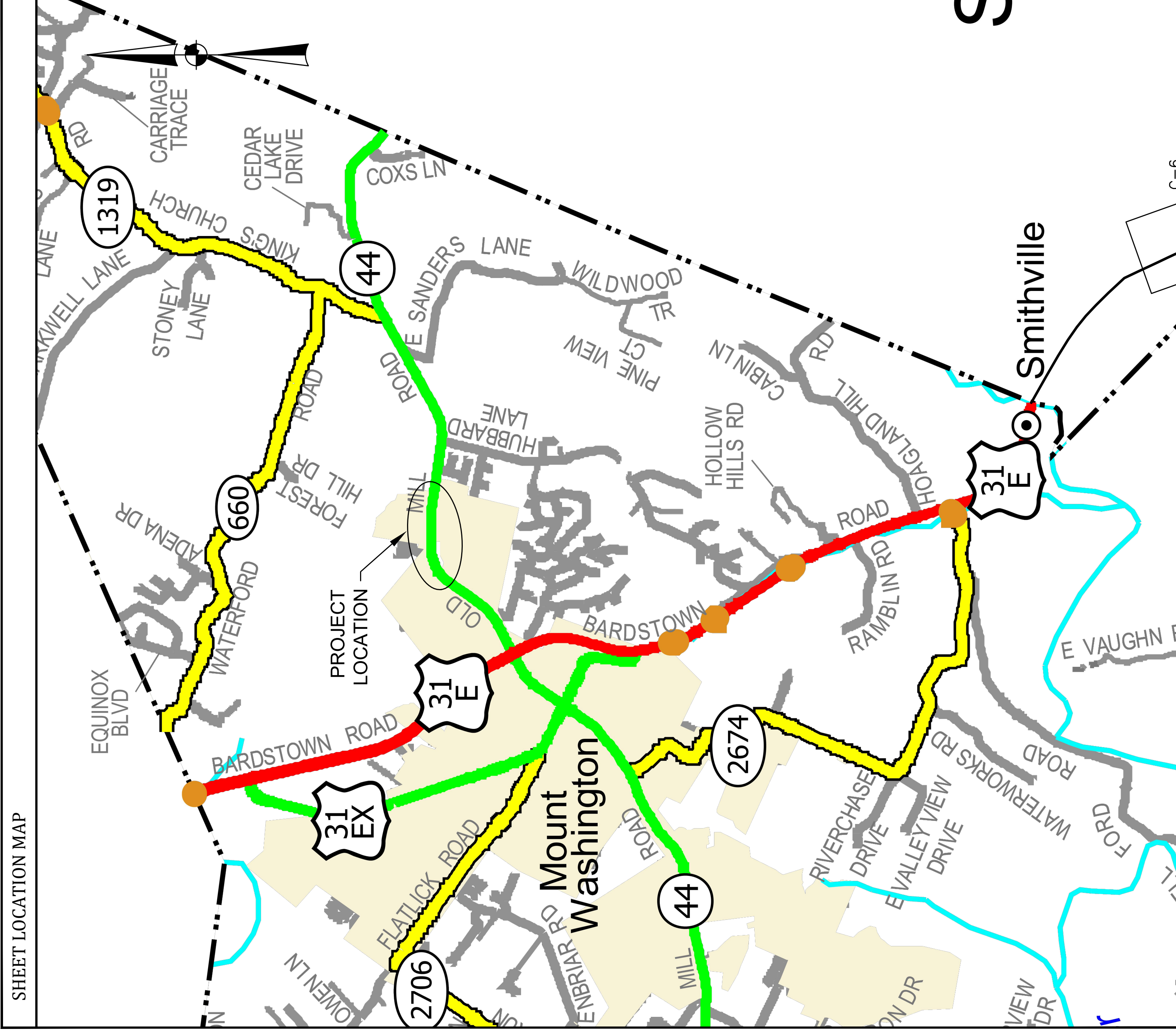
LINE	BID CODE	ALT	DESCRIPTION	QUANTITY	UNIT	UNIT PRIC	FP	AMOUNT
0850	04740		POLE BASE	2.00	EACH		\$	
0860	04844		CABLE-NO. 14/5C	70.00	LF		\$	
0870	22939ND		INSTALL LUMINAIRE POLE	2.00	EACH		\$	
0880	24601EC		INSTALL SOLAR POWERED BEACON CONTROLLER	2.00	EACH		\$	
0890	24955ED		REMOVE SIGNAL EQUIPMENT	1.00	EACH		\$	

Section: 0006 - WATERLINE

LINE	BID CODE	ALT	DESCRIPTION	QUANTITY	UNIT	UNIT PRIC	FP	AMOUNT
0900	14009		W ENCASEMENT STEEL BORED RANGE 4 (REVISED 9-16-22)	125.00	LF		\$	
0910	14010		W ENCASEMENT STEEL BORED RANGE 5	321.00	LF		\$	
0920	14019		W FIRE HYDRANT ASSEMBLY	6.00	EACH		\$	
0930	14021		W FIRE HYDRANT REMOVE	2.00	EACH		\$	
0940	14059		W PIPE PVC 06 INCH	15.00	LF		\$	
0950	14060		W PIPE PVC 08 INCH (REVISED 9-21-22)	200.00	LF		\$	
0960	14062		W PIPE PVC 12 INCH	2,280.00	LF		\$	
0970	14074		W PLUG EXISTING MAIN	8.00	EACH		\$	
0980	14080		W SERV PE/PLST LONG SIDE 3/4 IN	6.00	EACH		\$	
0990	14085		W SERV PE/PLST SHORT SIDE 3/4 IN	4.00	EACH		\$	
1000	14089		W TAPPING SLEEVE AND VALVE SIZE 1 (REVISED 9-21-22)	5.00	EACH		\$	
1005	14090		W TAPPING SLEEVE AND VALVE SIZE 2 (ADDED 9-21-22)	2.00	EACH		\$	
1010	14094		W TIE-IN 06 INCH	1.00	EACH		\$	
1020	14105		W VALVE 06 INCH	1.00	EACH		\$	
1030	14106		W VALVE 08 INCH	2.00	EACH		\$	
1040	14108		W VALVE 12 INCH	12.00	EACH		\$	
1050	14126		W ENCASEMENT SPECIAL	471.00	LF		\$	
1060	14144		W LINE MARKER	15.00	EACH		\$	

Section: 0007 - DEMOBILIZATION &/OR MOBILIZATION

LINE	BID CODE	ALT	DESCRIPTION	QUANTITY	UNIT	UNIT PRIC	FP	AMOUNT
1070	02569		DEMOBILIZATION	1.00	LS		\$	



BULLITT COUNTY
NOT TO SCALE

INDEX OF DRAWINGS

SHT. NO.	DESCRIPTION:
U1	COVER
U2	PROJECT LOCATION MAP, INDEX OF DRAWINGS, UTILITIES and LEGEND
U3	GENERAL NOTES
U4	PLAN - UTILITY RELOCATION
U5	PLAN - UTILITY RELOCATION
U6	PLAN - UTILITY RELOCATION
U7	PLAN - UTILITY RELOCATION
U8	STANDARD DETAILS
U9	STANDARD DETAILS

DRAWING LEGEND

---	PROPERTY LINE
---	EDGE OF PAVEMENT
INV.	INVERT
STA.	STATION
EX/EXIST.	EXISTING
M.H.	MANHOLE
(WT)	WATER TIGHT
P.P.	POWER POLE
CAVY	COMBINATION AIR AND VACUUM RELEASE VALVE
⊕	GRINDER PUMP STATION
—●—	PROPOSED FORCE MAIN
—●—	PROPOSED SANITARY SEWER
—▲—	PROPOSED COMBINATION AIR AND VACUUM RELEASE VALVE
—	EXISTING UTILITIES
○	PROPOSED CLEANOUT
○	EXISTING MANHOLE
■	PROPOSED PUMP STATION
→	DIRECTION OF FLOW
②	PLAN SHEET NUMBER
□	PLAN SHEET COVERAGE

UTILITIES

BUD - Before You Dig
1-800-752-6007
or DIAL 811

NOTE:
IN ACCORDANCE WITH KENTUCKY STATE LAW, ANY ACTIVITY THAT RESULTS IN MOVEMENT, PLACEMENT, BORING, PROBING OR DIGGING IN OR ON THE GROUND SHALL CONTACT THE ONE CALL CENTER FOR UNDERGROUND UTILITY LOCATIONS.

SUMMARY OF QUANTITIES

BID CODE	DESCRIPTION	DESCRIPTION	UNIT	QUANTITY
14062	W PIPE PVC 12 INCH	12" PVC SDR 17, Class 250	L.F.	2,280
14060	W PIPE PVC 08 INCH	8" PVC SDR 17, Class 250	L.F.	200
14059	W PIPE PVC 06 INCH	6" PVC SDR 17, Class 250	L.F.	15
14074	W PLUG EXISTING MAIN	Cut & Plug Existing Water Main	EA.	8
14080	W SERV PE/PLST LONG SIDE 3/4 IN	Relocation Existing Customer Service Opposite	EA.	6
14085	W SERV PE/PLST SHORT SIDE 3/4 IN	Relocation Existing Customer Service Same Side	EA.	4
14126	W ENCASMENT SPECIAL	2" HDPE Casing Pipe for Service Line	L.F.	471
14019	W FIRE HYDRANT ASSEMBLY	Fire Hydrant Assembly	EA.	6
14094	W TIE-IN 06 INCH	Connect to Existing Water Main	EA.	1
14089	W TAPPING SLEEVE AND VALVE SIZE 1	Wet Tap connection to Existing Water Main	EA.	5
14090	W TAPPING SLEEVE AND VALVE SIZE 2	Wet Tap connection to Existing Water Main	EA.	2
14108	W VALVE 12 INCH	Gate Valve - 12 In (w/Box)	EA.	12
14105	W VALVE 06 INCH	Gate Valve - 6 In (w/Box)	EA.	1
14106	W VALVE 08 INCH	Gate Valve - 8 In (w/Box)	EA.	2
14010	W ENCASMENT STEEL BORED RANGE 5	20-inch Steel Casing Pipe, Bore & Jack	L.F.	321
14009	W ENCASMENT STEEL BORED RANGE 4	16-inch Steel Casing Pipe, Bore & Jack	L.F.	125
14144	W LINE MARKER	Fiberglass Line Marker	EA.	15
14021	W FIRE HYDRANT REMOVE	Ex. Hydrant to Be Removed	EA.	2

IT IS A VIOLATION OF LAW FOR ANY PERSON TO ALTER THIS DRAWING WITHOUT WRITTEN PERMISSION FROM KENTUCKY ENGINEERING GROUP, PLLC AND ACTING UNDER THE DIRECTION OF A LICENSED ENGINEER.

THIS DRAWING WAS PREPARED AT THE SCALE INDICATED. INACCURACIES IN THE STATED SCALE MAY BE INTRODUCED WHEN DRAWINGS ARE REPRODUCED BY ANY MEANS. USE THE GRAPHIC SCALE BAR IN THE DRAWING OR TITLE BLOCK TO DETERMINE THE ACTUAL SCALE.

NO.	DATE	REVISIONS	BY

DATE:	APRIL 2022
PROJECT MGR:	RET
DRAWN BY:	JAB
CHECKED BY:	JCT
SCALE:	AS NOTED

2022 © Kentucky Engineering Group, PLLC

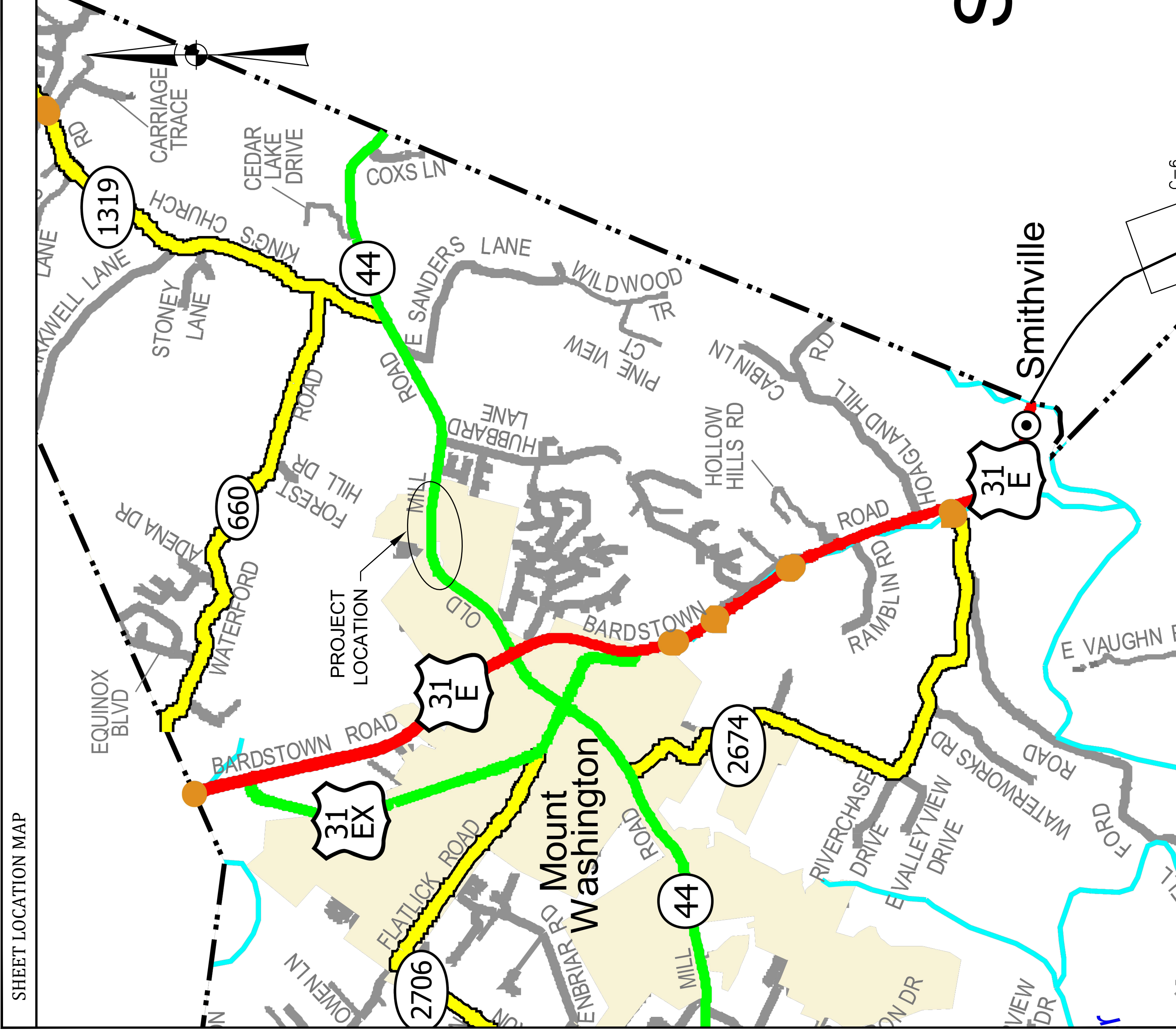


KY HWY 44
FOR THE
WATER MAIN RELOCATION
CITY OF MT. WASHINGTON
BULLITT COUNTY, KY

PROJECT LOCATION MAP, INDEX OF DRAWINGS, UTILITIES and LEGEND

PROJECT NO.
21029

SHEET NO.
U2



BULLITT COUNTY
NOT TO SCALE

INDEX OF DRAWINGS

SHT. NO.	DESCRIPTION:
U1	COVER
U2	PROJECT LOCATION MAP, INDEX OF DRAWINGS, UTILITIES and LEGEND
U3	GENERAL NOTES
U4	PLAN - UTILITY RELOCATION
U5	PLAN - UTILITY RELOCATION
U6	PLAN - UTILITY RELOCATION
U7	PLAN - UTILITY RELOCATION
U8	STANDARD DETAILS
U9	STANDARD DETAILS

UTILITIES

BUD - Before You Dig
1-800-752-6007
or DIAL 811

NOTE:
IN ACCORDANCE WITH KENTUCKY STATE LAW, ANY ACTIVITY THAT RESULTS IN MOVEMENT, PLACEMENT, BORING, PROBING OR DIGGING IN OR ON THE GROUND SHALL CONTACT THE ONE CALL CENTER FOR UNDERGROUND UTILITY LOCATIONS.

DRAWING LEGEND

---	PROPERTY LINE
---	EDGE OF PAVEMENT
INV.	INVERT
STA.	STATION
EX/EXIST.	EXISTING
M.H.	MANHOLE
(WT)	WATER TIGHT
P.P.	POWER POLE
CAVY	COMBINATION AIR AND VACUUM RELEASE VALVE
⊕	GRINDER PUMP STATION
—●—	PROPOSED FORCE MAIN
—●—	PROPOSED SANITARY SEWER
—▲—	PROPOSED COMBINATION AIR AND VACUUM RELEASE VALVE
—	EXISTING UTILITIES
○	PROPOSED CLEANOUT
○	EXISTING MANHOLE
■	PROPOSED PUMP STATION
→	DIRECTION OF FLOW
②	PLAN SHEET NUMBER
□	PLAN SHEET COVERAGE

SUMMARY OF QUANTITIES

BID CODE	DESCRIPTION	DESCRIPTION	UNIT	QUANTITY
14062	W PIPE PVC 12 INCH	12" PVC SDR 17, Class 250	L.F.	2,280
14060	W PIPE PVC 08 INCH	8" PVC SDR 17, Class 250	L.F.	200
14059	W PIPE PVC 06 INCH	6" PVC SDR 17, Class 250	L.F.	15
14074	W PLUG EXISTING MAIN	Cut & Plug Existing Water Main	EA.	8
14080	W SERV PE/PLST LONG SIDE 3/4 IN	Relocation Existing Customer Service Opposite	EA.	6
14085	W SERV PE/PLST SHORT SIDE 3/4 IN	Relocation Existing Customer Service Same Side	EA.	4
14126	W ENCASMENT SPECIAL	2" HDPE Casing Pipe for Service Line	L.F.	471
14019	W FIRE HYDRANT ASSEMBLY	Fire Hydrant Assembly	EA.	6
14094	W TIE-IN 06 INCH	Connect to Existing Water Main	EA.	1
14089	W TAPPING SLEEVE AND VALVE SIZE 1	Wet Tap connection to Existing Water Main	EA.	5
14090	W TAPPING SLEEVE AND VALVE SIZE 2	Wet Tap connection to Existing Water Main	EA.	2
14108	W VALVE 12 INCH	Gate Valve - 12 In (w/Box)	EA.	12
14105	W VALVE 06 INCH	Gate Valve - 6 In (w/Box)	EA.	1
14106	W VALVE 08 INCH	Gate Valve - 8 In (w/Box)	EA.	2
14070	W ENCASMENT STEEL BORED NETWORKS	20' of 18" Steel Bored Pipe, Bore & Jack	L.F.	321
14009	W ENCASMENT STEEL BORED RANGE 4	16-inch Steel Casing Pipe, Bore & Jack	L.F.	125
14144	W LINE MARKER	Fiberglass Line Marker	EA.	15
14021	W FIRE HYDRANT REMOVE	Ex. Hydrant to Be Removed	EA.	2

IT IS A VIOLATION OF LAW FOR ANY PERSON TO ALTER THIS DRAWING WITHOUT WRITTEN PERMISSION FROM KENTUCKY ENGINEERING GROUP, PLLC AND ACTING UNDER THE DIRECTION OF A LICENSED ENGINEER.

THIS DRAWING WAS PREPARED AT THE SCALE INDICATED. INACCURACIES IN THE STATED SCALE MAY BE INTRODUCED WHEN DRAWINGS ARE REPRODUCED BY ANY MEANS. USE THE GRAPHIC SCALE BAR IN THE DRAWING OR TITLE BLOCK TO DETERMINE THE ACTUAL SCALE.

NO.	DATE	REVISIONS	BY

DATE:	APRIL 2022
PROJECT MGR:	RET
DRAWN BY:	JAB
CHECKED BY:	JCT
SCALE:	AS NOTED

2022 © Kentucky Engineering Group, PLLC

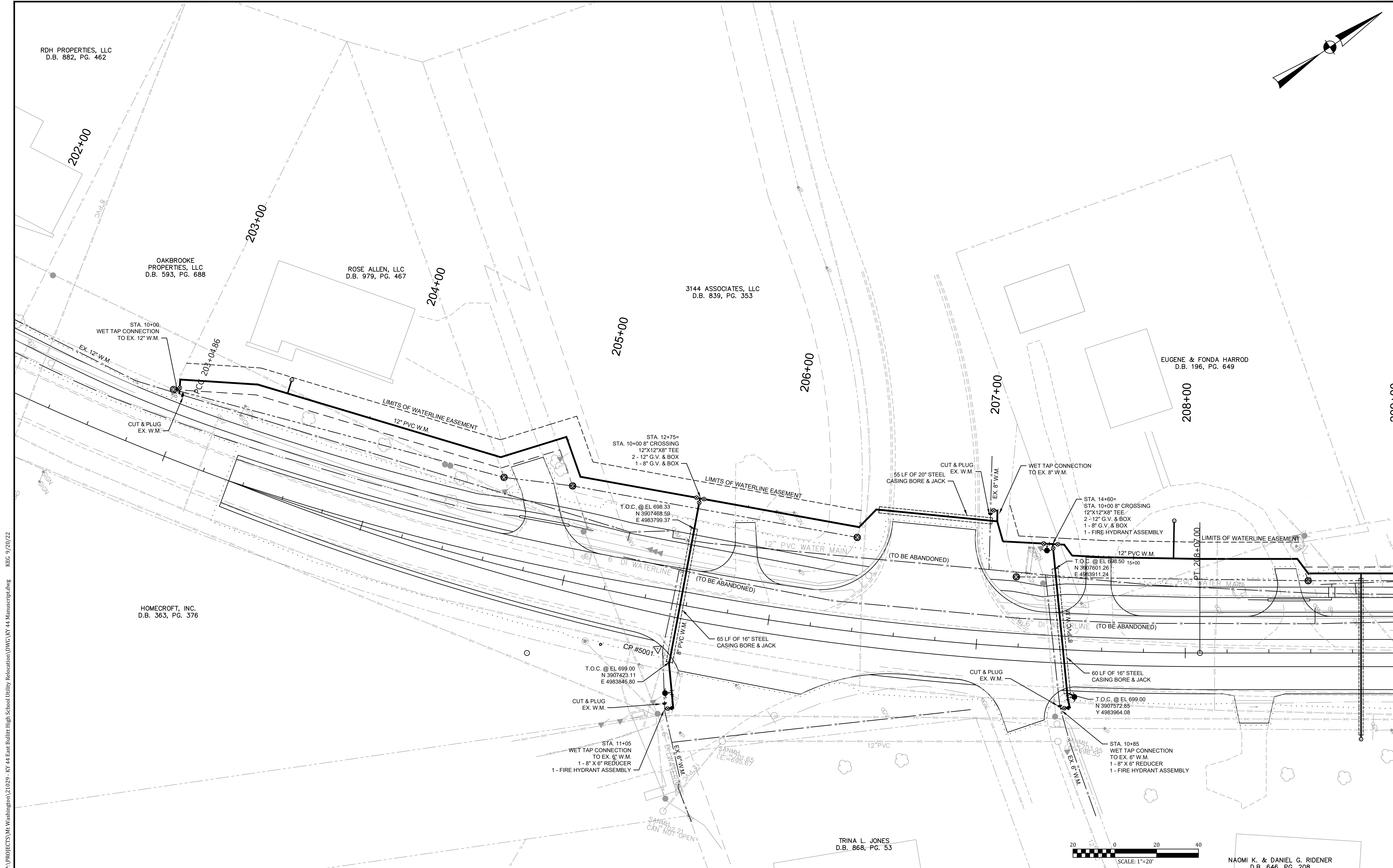
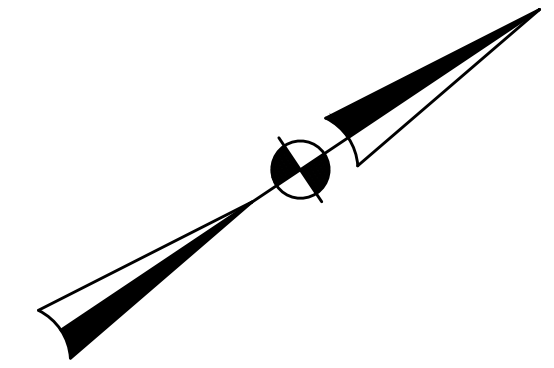


KY HWY 44
FOR THE
CITY OF MT. WASHINGTON
BULLITT COUNTY, KY

PROJECT LOCATION MAP, INDEX OF DRAWINGS, UTILITIES and LEGEND

PROJECT NO.
21029

SHEET NO.
U2



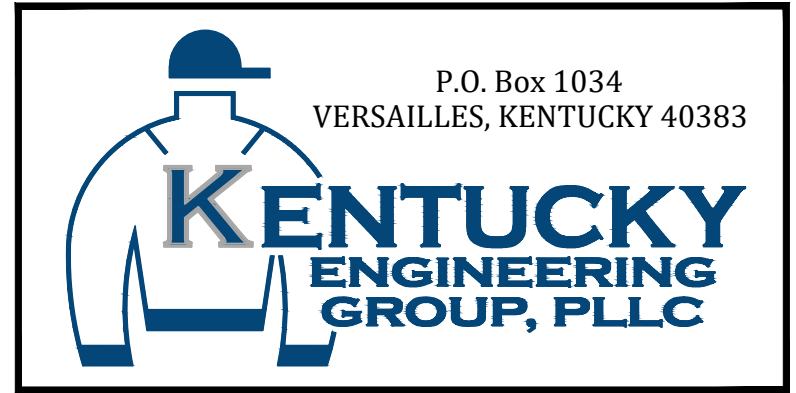
P:\PROJECTS\Mt. Washington\21029 - KY 44 East Bullitt High School Utility Relocation\DWG\KY 44 Manuscript.dwg KEG 9/20/22

IT IS A VIOLATION OF LAW FOR ANY PERSON TO ALTER THIS DRAWING WITHOUT WRITTEN PERMISSION FROM KENTUCKY ENGINEERING GROUP, PLLC AND ACTING UNDER THE DIRECTION OF A LICENSED ENGINEER.

THIS DRAWING WAS PREPARED AT THE SCALE INDICATED. INACCURACIES IN THE STATED SCALE MAY BE INTRODUCED WHEN DRAWINGS ARE REPRODUCED BY ANY MEANS. USE THE GRAPHIC SCALE BAR IN THE DRAWING OR TITLE BLOCK TO DETERMINE THE ACTUAL SCALE.

NO.	DATE	REVISIONS	BY

DATE:	APRIL 2022
PROJECT MGR:	RET
DRAWN BY:	JAB
CHECKED BY:	JCT
SCALE:	AS NOTED
2022 © Kentucky Engineering Group, PLLC	

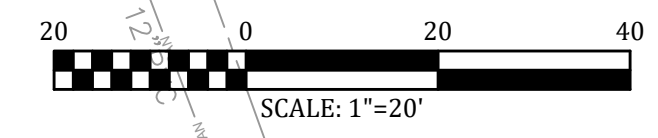


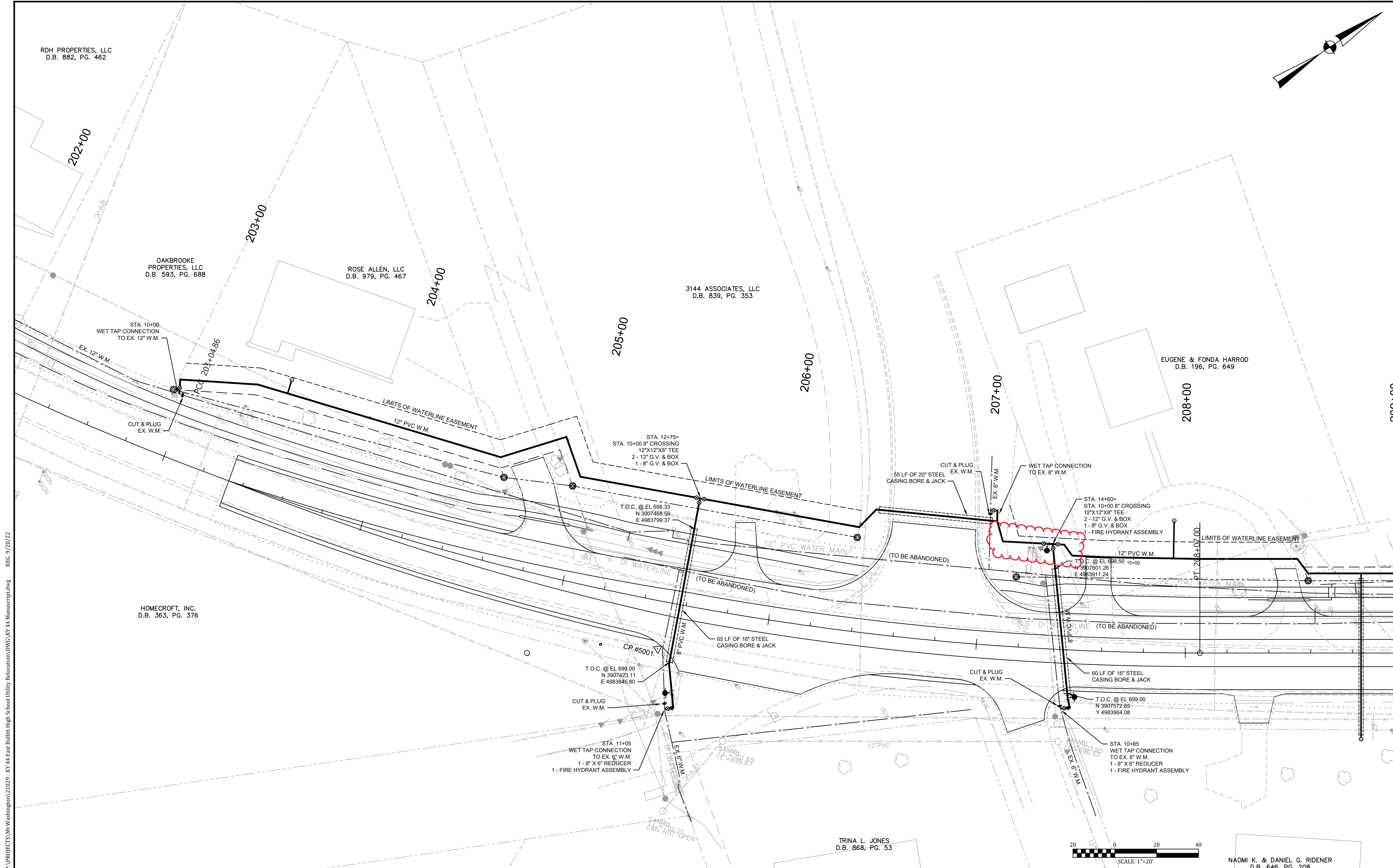
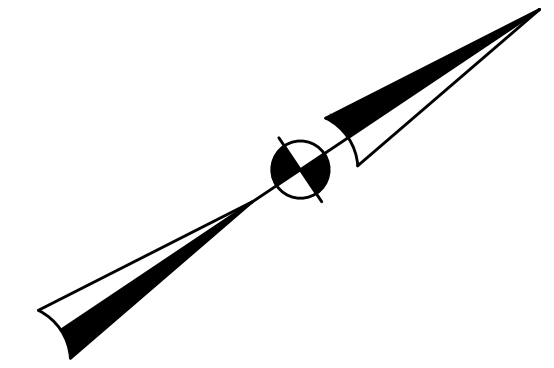
KY HWY 44
WATER MAIN RELOCATION
 FOR THE
CITY OF MT. WASHINGTON
 BULLITT COUNTY, KY

PLAN - UTILITY RELOCATION

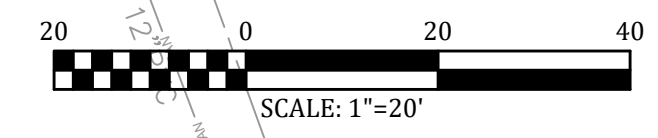
NAOMI K. & DANIEL G. RIDENER
 D.B. 646, PG. 208

PROJECT NO.	21029
SHEET NO.	U4





P:\PROJECTS\Mt. Washington\21029 - KY 44 East Bullitt High School Utility Relocation\DWG\KY 44 Manuscript.dwg KEG 9/20/22



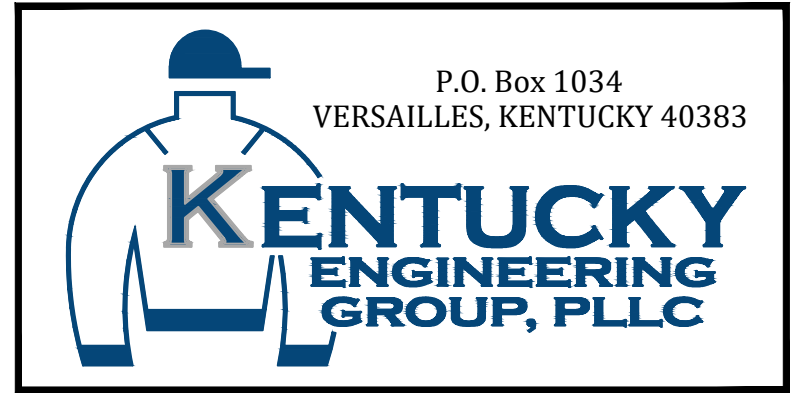
NAOMI K. & DANIEL G. RIDENER
D.B. 646, PG. 208

IT IS A VIOLATION OF LAW FOR ANY PERSON TO ALTER THIS DRAWING WITHOUT WRITTEN PERMISSION FROM KENTUCKY ENGINEERING GROUP, PLLC AND ACTING UNDER THE DIRECTION OF A LICENSED ENGINEER.

THIS DRAWING WAS PREPARED AT THE SCALE INDICATED. INACCURACIES IN THE STATED SCALE MAY BE INTRODUCED WHEN DRAWINGS ARE REPRODUCED BY ANY MEANS. USE THE GRAPHIC SCALE BAR IN THE DRAWING OR TITLE BLOCK TO DETERMINE THE ACTUAL SCALE.

NO.	DATE	REVISIONS	BY

DATE:	APRIL 2022
PROJECT MGR:	RET
DRAWN BY:	JAB
CHECKED BY:	JCT
SCALE:	AS NOTED
2022 © Kentucky Engineering Group, PLLC	



KY HWY 44
WATER MAIN RELOCATION
 FOR THE
CITY OF MT. WASHINGTON
 BULLITT COUNTY, KY

PLAN - UTILITY RELOCATION

PROJECT NO.
21029

SHEET NO.
U4

PROJECT NO.
21029

SHEET NO.
U4